

MONTHLY MEMBERSHIP PROGRESS REPORT

LOCATION VIRGINIA

District 24 I

Results as of: 5/31/2023

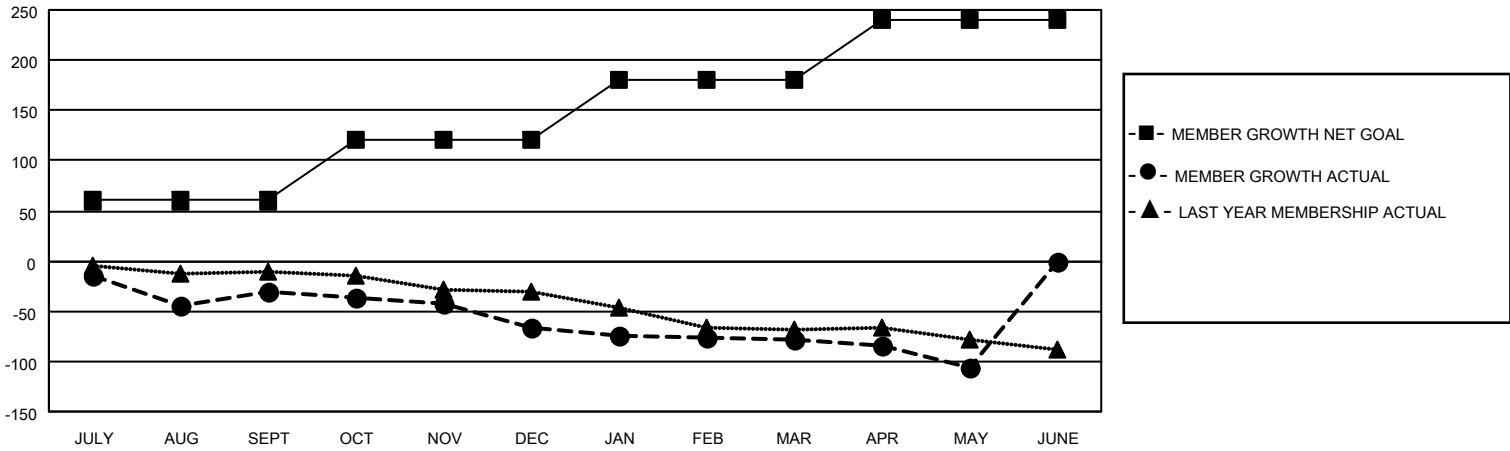
Clubs			
RESULTS FOR 2022-2023			
QUARTER	NEW CLUB GOAL	NEW CLUBS	DROPPED CLUBS
JULY/AUG/SEPT	0	0	0
OCT/NOV/DEC	1	0	1
JAN/FEB/MAR	1	0	0
APR/MAY/JUNE	0	0	1

Members			
RESULTS FOR 2022-2023			
QUARTER	MEMBER GROWTH NET GOAL	MEMBER GROWTH ACTUAL	DROPPED MEMBERS ACTUAL (including transfers)
JULY/AUG/SEPT	60	33	61
OCT/NOV/DEC	60	44	73
JAN/FEB/MAR	60	53	61
APR/MAY/JUNE	60	36	59

GOALS AND ACTUAL NEW CLUBS CUMULATIVE



GOALS AND ACTUAL MEMBERS CUMULATIVE



DROPPED CLUBS: 2

46 CLUBS OF 89 ADDED 1 OR MORE NEW MEMBERS

GENDER DISTRIBUTION

MALE	1,128 (62.98%)
FEMALE	663 (37.02%)
NON BINARY	0 (0.00%)
PREFER NOT TO ANSWER	0 (0.00%)

DROPPED MEMBERS

[CLICK HERE FOR CUMULATIVE MEMBERSHIP DATA](#)

DECEASED	44
CLUB CANCELLED	26
OTHER	184
TOTAL	254

TOTAL FAMILY UNIT MEMBERS 261

FAMILY MEMBERS PAYING HALF DUES 132